

My Media Experience

# Easy Kodi Checklist



How to Customize Kodi with  
All the Bells and Whistles

# Table of contents

## Step 1: Setup

- Disable RSS feed
- Change localization
- Configure weather settings
- Set up a media library
- Change media library views
- Create playlists and filters

## Step 2: Integrate

- Watch videos with YouTube
- Enjoy HiFi music with Tidal
- View photos with an Apple TV like screensaver
- Send content from your phone to Kodi with Pushbullet
- Install PVR back-end
- Enable PVR front-end
- Integrate Netflix, Hulu, and other premium channels
- Integrate with Plex
- Integrate with Emby
- Integrate Steam Big Picture

## Step 3: Personalize

- Add user profiles
- Improve your TV viewing experience with LazyTV
- Create main menu items
- Install a new skin (theme)

# Your mission

The purpose of this guide is to help you on becoming proficient in using Kodi with all its many features.

You can use Kodi media center to play movies, TV shows, home videos, PVR & live TV, music, pictures, and games.

**Your mission is to study this collection of ways to use Kodi and then put your knowledge into practice.**



[Share this guide on Facebook \(click here\)](#)

Be sure to share this PDF guide with Kodi fans in your social network!

# About the author

My Media Experience is an in-depth resource run by me , Tuukka, to teach do-it-yourself hobbyists how to transform their home media consumption into a hassle-free, personalized experience.

Hi! My name is Tuukka and I'm the founder of My Media Experience blog and Blueprint training courses.

I've been building home theater computers for 15 years.

Since August 2009, I've been running this online resource called My Media Experience, where you will find me building and testing the latest HTPC hardware and software so you know exactly how to build your own.

## There is no single manual for doing all of this

The biggest obstacle for setting up HTPC is to make all hardware and software working seamlessly together to create a user-friendly media experience.

My Media Experience site will walk you through a step-by-step process to set up your HTPC from scratch, choose the right software, and make it user friendly.

In order to help you to figure out the best hardware and easiest software, I created a course called Media Experience Blueprint that is kept up-to-date.

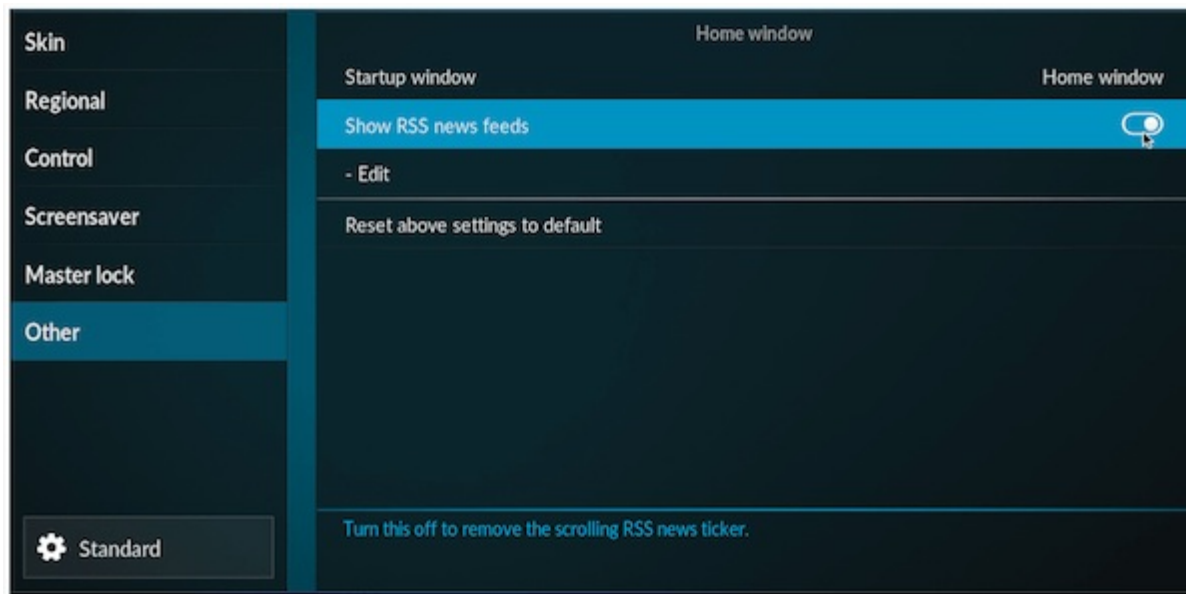
**[Click to get access to My Media Experience Blueprint course](#)**

Good luck with your journey!

*Tuukka Koski*

# Disable RSS feed

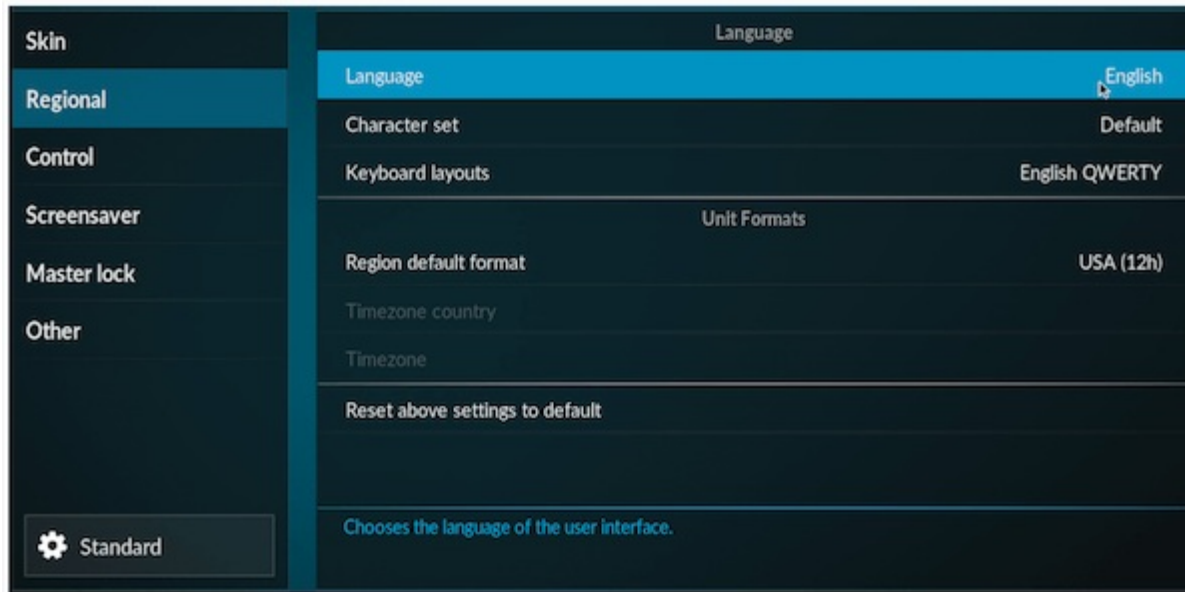
An RSS feed that scrolls at the bottom of the screen consumes a little computing performance and can be irritating over time, so I would recommend disabling it unless you really need it.



1. In the Kodi main menu, go to Settings.
2. Select the Interface settings.
3. In the Other tab, disable show RSS news feed.
4. Now, go back to the main menu by pressing the back key on the remote control or ESC-key on the keyboard.

# Change localization

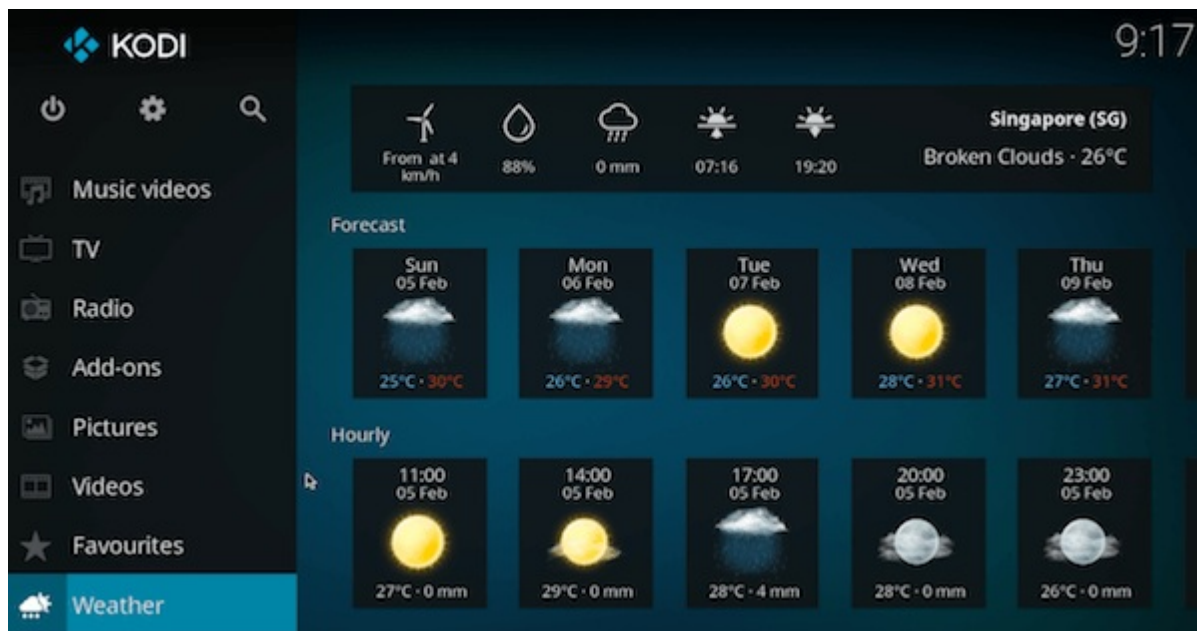
You may want to change the language of the user interface or select the formats for temperature, time, and date.



1. In the Kodi main menu, go to Settings.
2. Select the Interface settings.
3. Select the second tab called Regional. Select Language to change it.
4. Select the suitable region format from the list.

# Configure weather settings

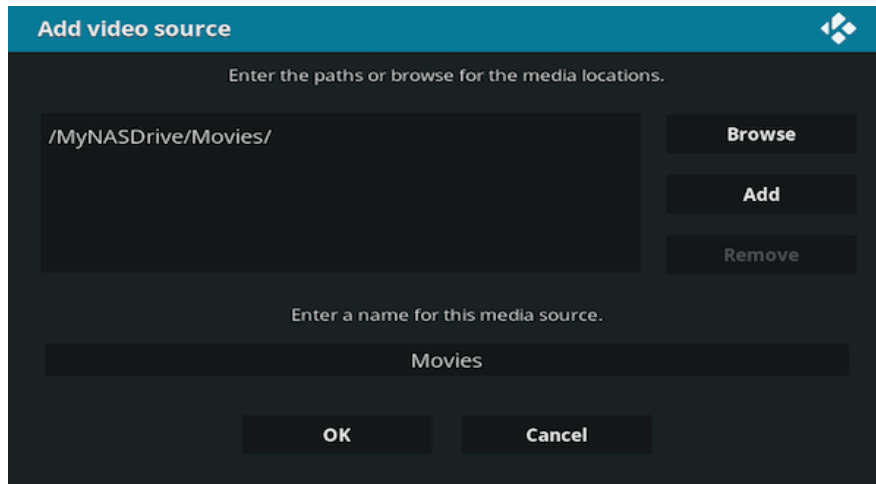
Configure Weather settings for your location.



1. On the home screen, scroll down to Weather and select "Set weather provider".
2. On the Weather settings tab, select "Service for weather information".
3. Select "Get more..."
4. Select your preferred Weather provider. I am using "OpenWeatherMap Extended".
5. Once add-on installation is complete, select "Settings" under the "Service for weather information".
6. Enter the nearest large town to the "Location 1" field.
7. Now, return to the home menu and you will see local weather information.

# Set up a media library

In order to set up your media library, you will need to add sources to video, music, and photo menus.

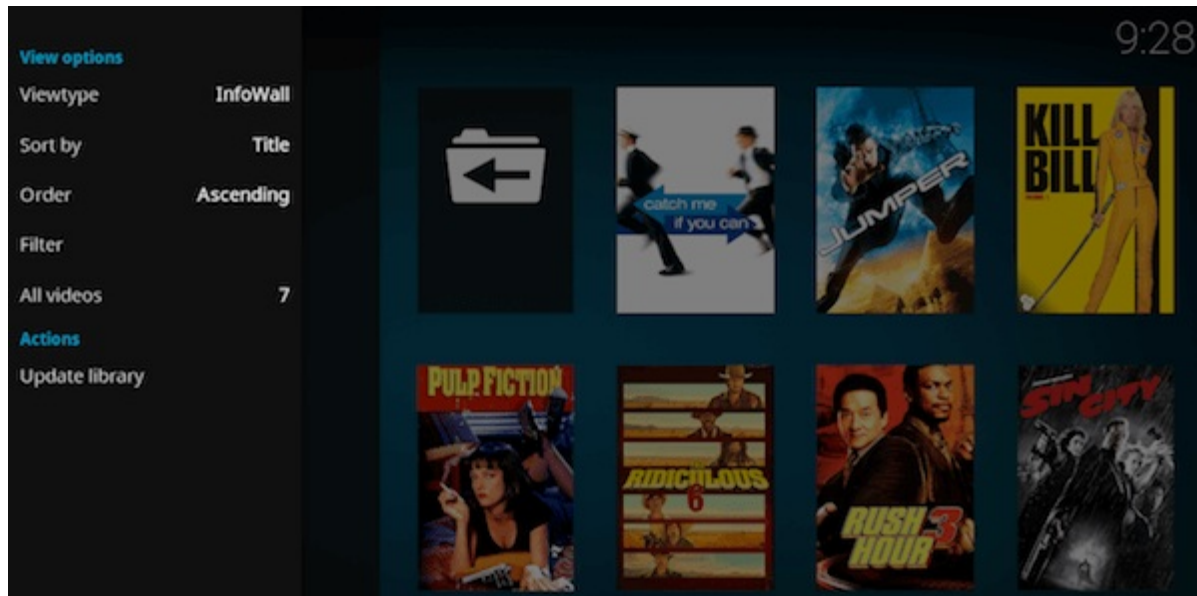


1. In the movies tab on the home screen, select "Enter files section" to enter "Files" section.
2. Select "Add Videos" and "Browse" in the add video source.
3. Browse to the folder where your media files are stored. If your files are located on a NAS, you will need to add the media share from the [NAS server](#).
4. Rename the media source, if needed, and select "OK".
5. In the set content window, you can set the type of media.
6. If your movies are located in separate folders, enable "Movies are in separate folders that match the movie title".
7. Confirm Yes in the Change content question.
8. Now, you can go back to main menu where you will find a new "Movies" menu with your recently added movies.



# Change media library views

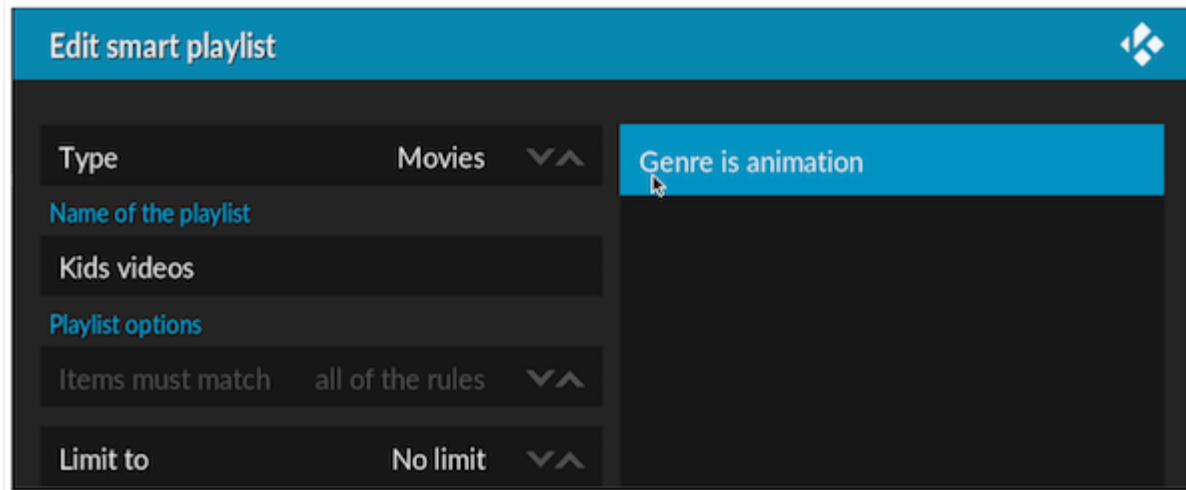
You can change the way you present the media library, if you do not like the default view in the movie, music, and photo library.



1. Go to movie, music, or photo library.
2. Open the panel by pressing the left key to view options.
3. Click "Viewtype" to change the view to poster, shift, infowall and fanart, or any other style your media will be presented.

# Create playlists and filters

Smart playlists are a little-known and used feature. The smart playlist allows you to filter, for example movies based on certain criteria.



1. Select Videos section in the home screen and choose "Video Playlists".
2. Select "New smart playlist..."
3. Select the type of the media, for example movie, and enter a title for the smart playlist, such as, "Kids Videos".
4. Click "New rule..." and set the criteria for the filter. For example, I selected all movies where genre is equal to animation.
5. Select "OK" to save your new smart playlist.
6. Now you can see your new playlist in the file browser.

# Show movies as collections

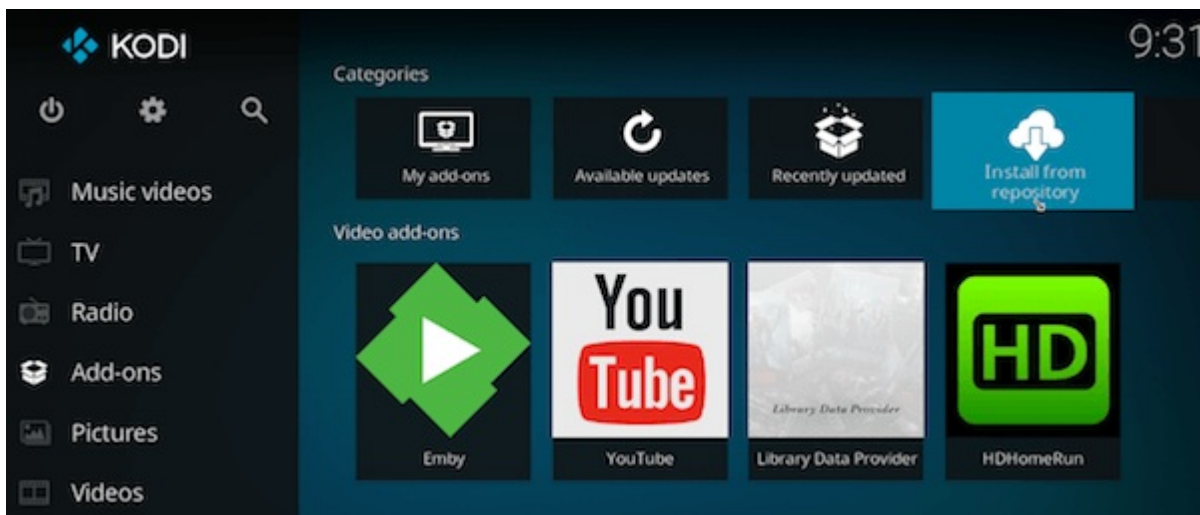
If you have a collection of movies, such as a trilogy of movies, you can also show them as collection.



1. Go to Settings > Library settings.
2. In the Videos tab, enable "Group movies in sets".
3. Go back to your movie library, and you will find that all sequels have been grouped as collections.

# Watch videos with YouTube

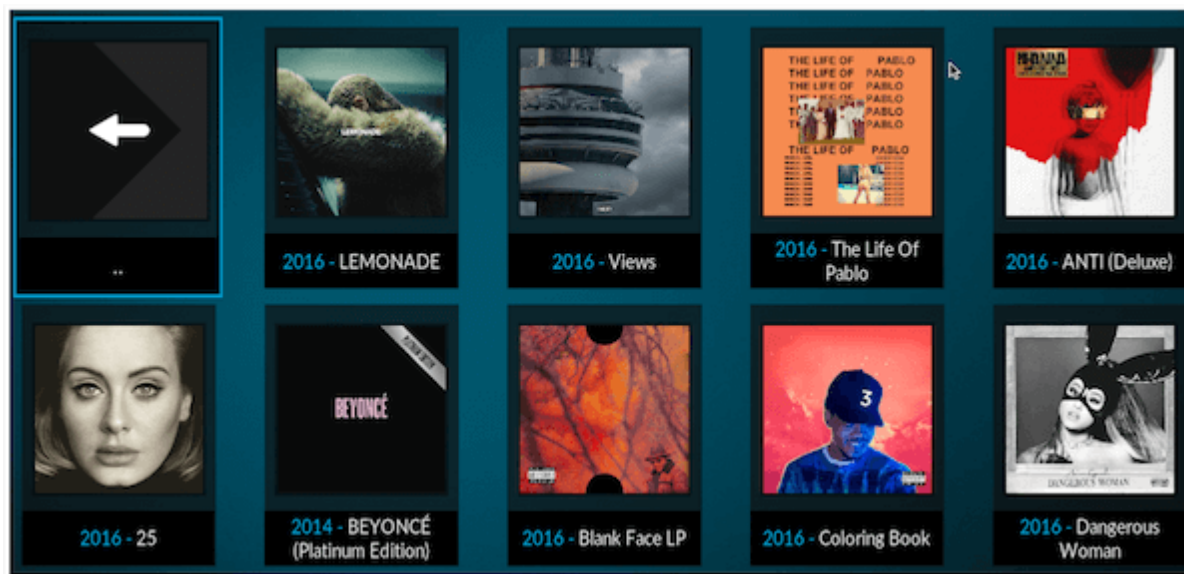
You can install official add-ons by following these steps.



1. Go to Add-ons tab on the home screen and select "Install from repository".
2. Go to "Kodi Add-on repository" > Video Add-ons" to, for example, add YouTube add-ons.
3. Click on the add-on and select install to download it.
4. You can go back to Add-ons menu, and you will find the new YouTube add-on under the Video Add-ons folder.

# Enjoy HiFi music with Tidal

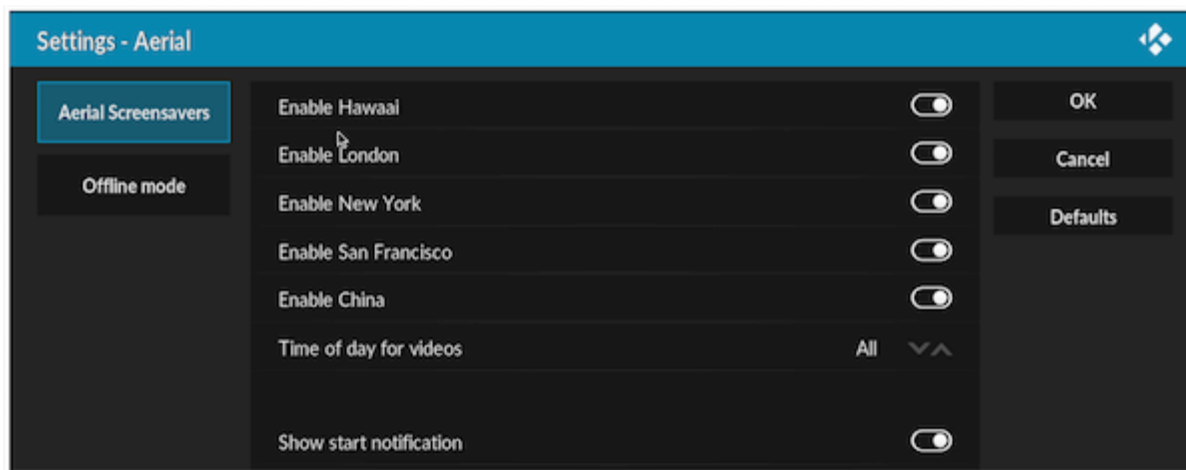
You can install Tidal from the official Kodi add-on repository.



1. Go to Add-ons tab on the home screen and enter add-on browser by clicking the download icon at the bottom of the screen.
2. Go to "Install from repository > Music Add-ons" > Tidal.
3. Click on the add-on and select install to download it.
4. Go back to Add-ons menu, and you will find the Tidal add-on under the Music Add-ons folder.
5. Press "C-key" to access the context menu and select "Add-on settings". Select the quality and then input your Tidal username and password.

# View photos with an Apple TV like screensaver

I would recommend checking out an Aerial add-on that displays the aerial movies Apple shot over New York, San Francisco, China, etc.



1. Go to Settings > Interface settings > Screensaver and select Screensaver mode.
2. Select "Get more..." and install Aerial Screensaver from the list.
3. Below the Screensaver mode, select "Settings".
4. In the "Aerial screensavers" tab, you can enable or disable default screensaver themes.
5. Now, you can test the screensaver by selecting the Preview.

# Send content from your phone to Kodi with Pushbullet

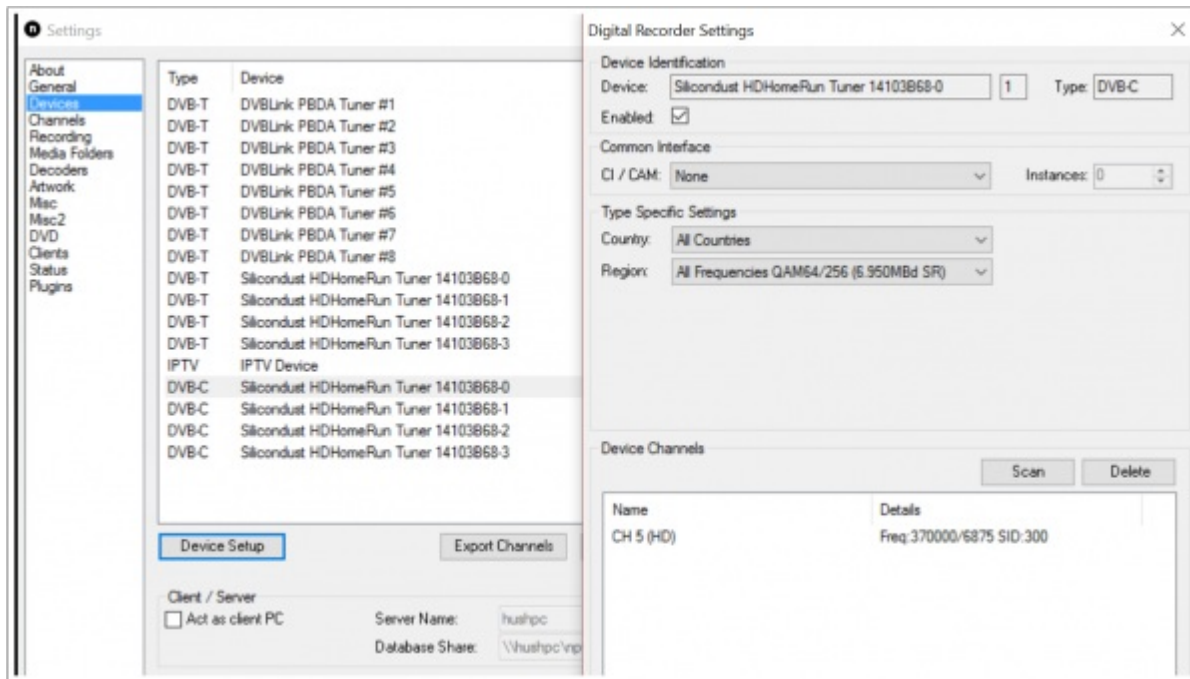
Pushbullet allows you to send content such as photos, videos, messages, YouTube, Vimeo, DailyMotion and more to Kodi.

Here are the steps to set up Pushbullet with Kodi:

1. Sign up to [Pushbullet](#) on their website.
2. Go to Add-ons tab on the home screen and enter the add-on browser by clicking the download icon.
3. Go to "Install from repository" > "Kodi Add-on repository" > "Services" > "Pushbullet".
4. Click on the add-on and select install to download it.
5. Go back to Add-ons menu, and you will find the Pushbullet add-on under the Programs Add-ons folder.
6. When you open the Pushbullet add-on for the first time, it will open the "Settings" page.
7. In the "Authorization" tab, select "Authorize".
8. Write the authorization code and go to <http://auth.2ndmind.com> with your browser on any device.
9. Enter the code on the webpage and select "Approve" once prompted.
10. Go back to Kodi, where Pushbullet settings will ask you to "Choose Device".
11. Select "+Add as New".
12. After typing the name for your device, you will get a "Linked" message.
13. Now, you can launch the Pushbullet add-on to start receiving push notices.

# Install PVR back-end

Here are the steps to install NextPVR and configure the TV server.

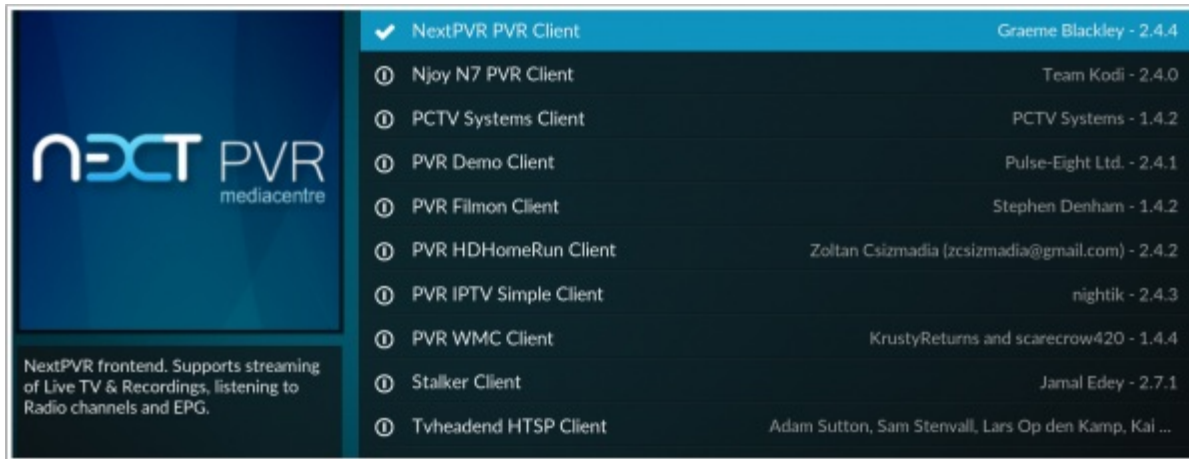


1. Download the [latest NextPVR version](#).
2. Launch NPVRSetup\_X\_X\_X.exe and follow the steps in the installation wizard.
3. Open NextPVR application and select Settings by clicking the right hand mouse button.
4. Go to "Devices" tab and select your TV tuner from the list (mine is HDHomeRun DVB-C tuner).
5. Click "Device Setup" select your country and region from the "Type Specific Settings".
6. Click "Scan" to search for the channels.
7. Go to "Channels" tab and select "Update EPG" retrieve the TV Guide (EPG) for all channels and devices.
8. Finally, click "OK" and exit the NextPVR application.



# Enable PVR front-end

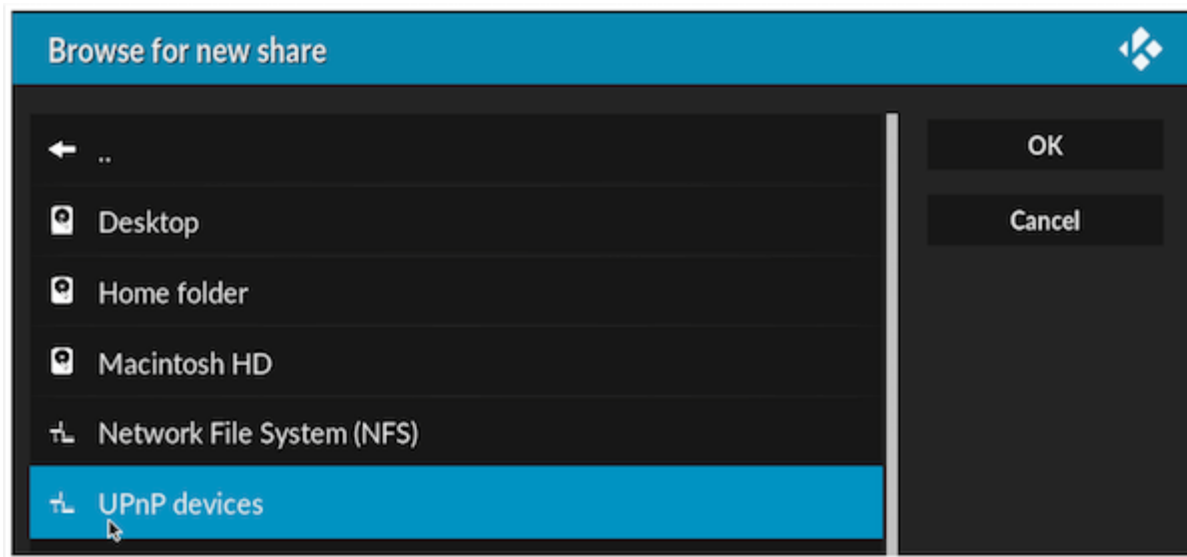
After you have built and configured the back-end server, it is time to configure the front-end server.



1. In Kodi, go to "Settings" > "System Settings" > "Add-ons" tab.
2. At the bottom of the screen, make sure you have either "Advanced" or "Expert" settings level selected.
3. In the "Add-ons" tab, select "Manage dependencies".
4. Select ".." to go to the root folder and select "My add-ons" and then "PVR clients".
5. Next, select your preferred software from the PVR client list (in my case "NextPVR PVR Client").
6. Click "Enable" start NextPVR client. You can also configure your TV server's IP address if you use a remote computer.
7. Now, Kodi should start importing the EPG from clients. Go back to the main menu and choose "TV" from the main menu to start watching the live TV stream.

# Integrate Netflix, Hulu, and other premium channels

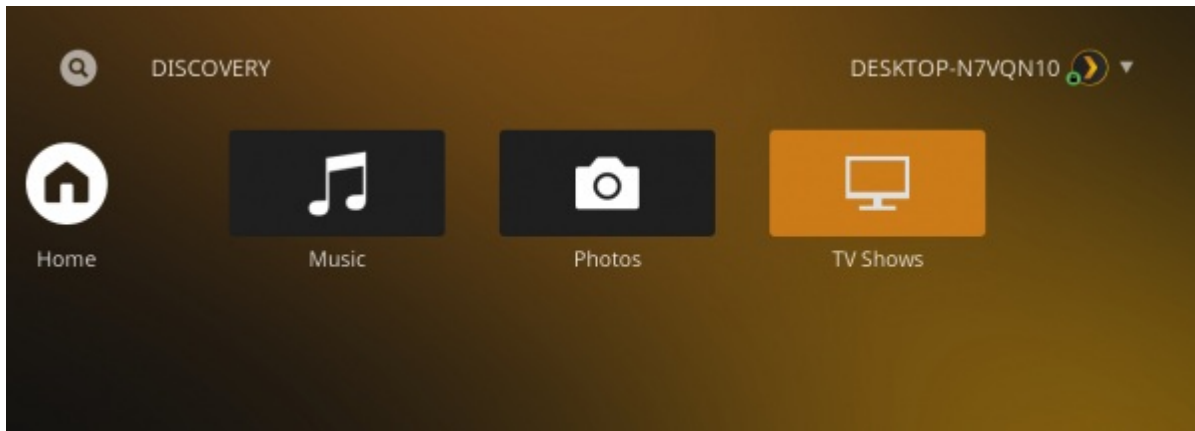
The easiest way to add almost 60 channels of premium content to Kodi is with the PlayOn Media Server for Windows.



1. In Kodi, go to "Videos" menu > "Files" and select "Add videos..."
2. In the Video source settings, browse for the media locations.
3. Select UPnP Devices and then "PlayOn" (your computer name) and then select "OK".
4. Go to "Videos > Files > PlayOn (your computer name)" and start browsing through the list of media services.

# Integrate with Plex

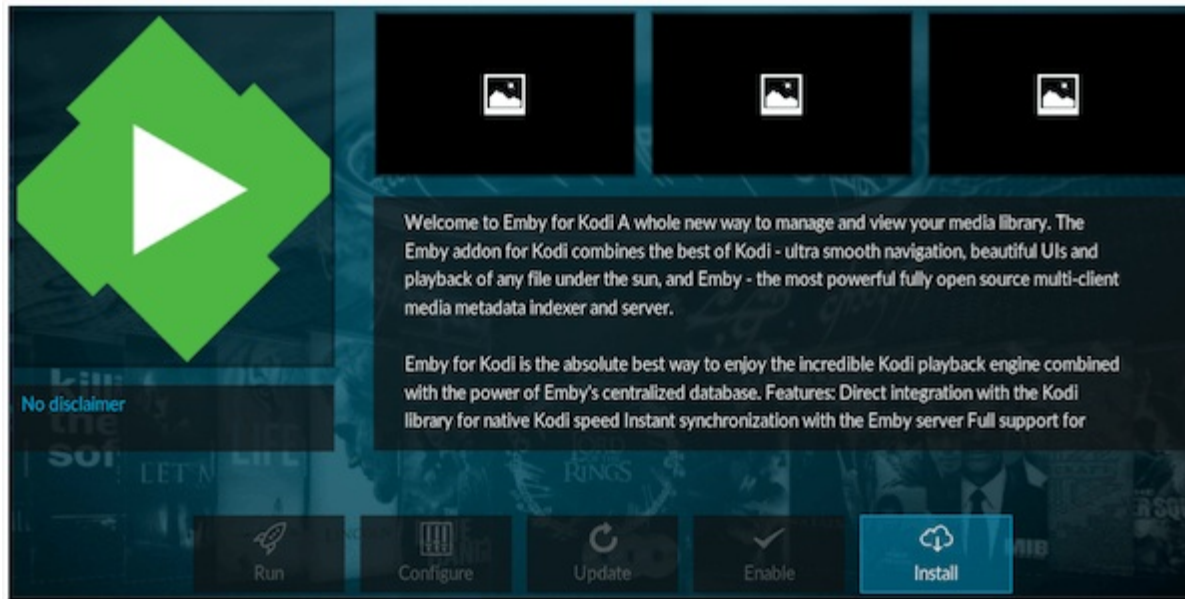
If you want to have an easy way to consume media files around your home, I would recommend using Plex Media Server as a back-end.



1. Go to Add-ons tab on the home screen and select "Install from repository > Video Add-ons" > Plex
2. Click on the Plex add-on and select install to download it.
3. You can go back to Add-ons menu, and you will find the new Plex add-on under the Video Add-ons folder.
4. Launch Plex add-on and select "Sign In". On your web browser (on any device), go to [plex.tv/link](https://plex.tv/link) and enter the code presented on your TV screen.
5. Now, you're all set and you can start discovering your content on Plex.

# Integrate with Emby

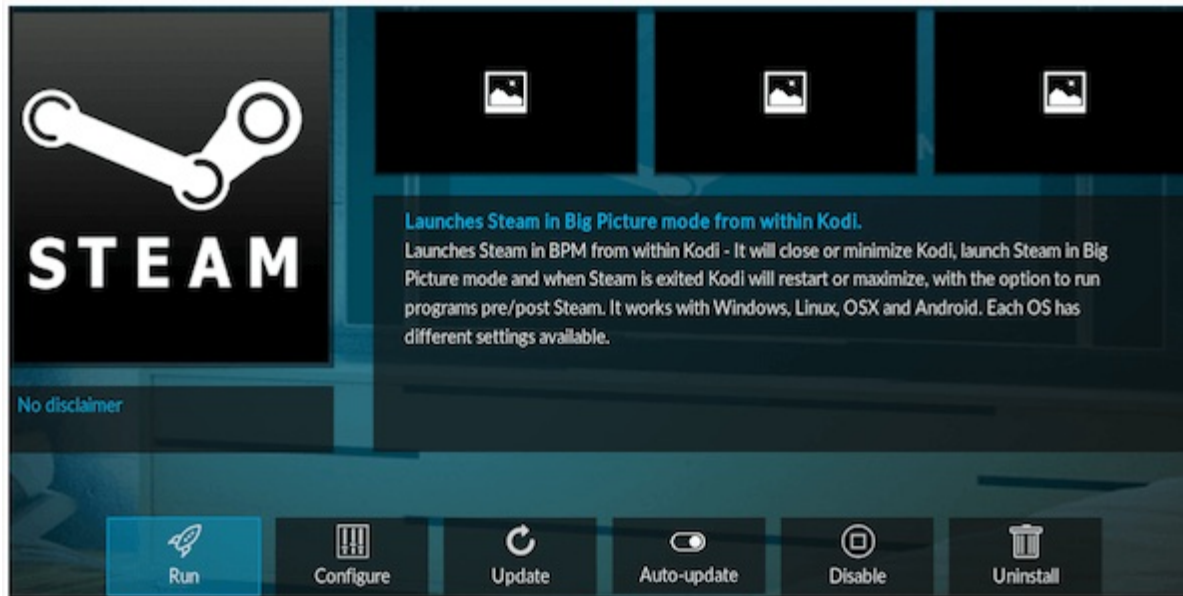
Emby Media Server is another great alternative to centrally manage all of your media files.



1. Go to Add-ons tab on the home screen and enter add-on browser by clicking the download icon at the bottom of the screen.
2. Go to "Install from zip file" > and locate the "repository.emby.kodi-1.0.3.zip".
3. Once you have installed Emby for Kodi repository, go back to Add-ons tab on the home screen and enter add-on browser by clicking the download icon at the bottom of the screen.
4. Go to "Install from repository" > "Kodi Emby Addons" > "Video Add-ons".
5. Click on the "Emby" add-on and select install to download it.
6. Once the installation is complete, you can change your media server's IP address in the settings if needed.
7. Now, all media content from Emby will be integrated with Kodi's library.
8. Choose Addon (Default) to determine how Emby will handle your library.

# Integrate Steam Big Picture

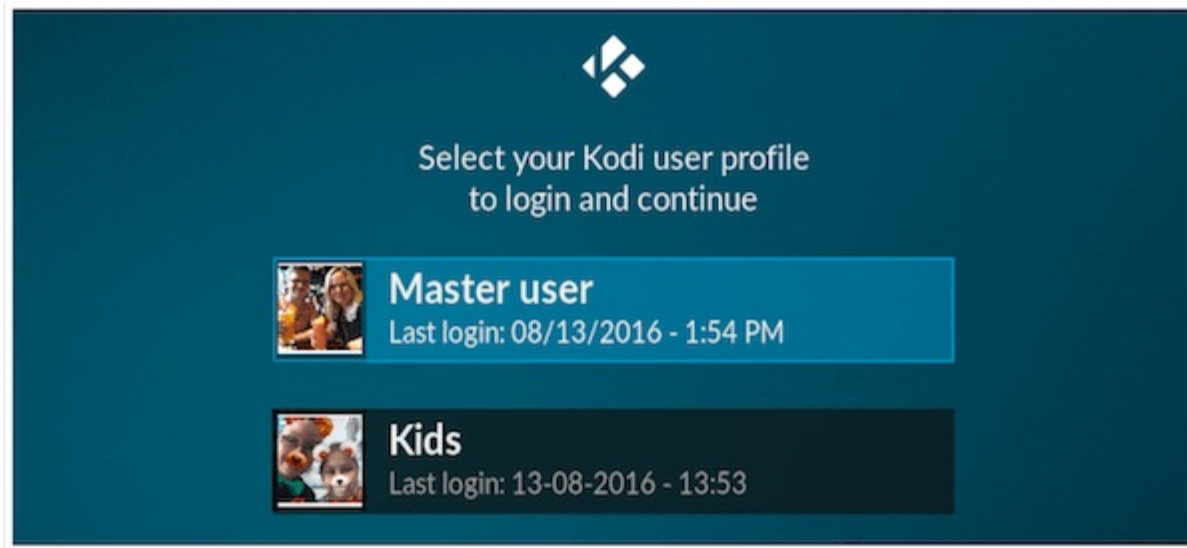
If you want to play games on Windows-based HTPC, you can integrate Steam Big Picture with the Kodi using a Steam Launcher.



1. Go to Add-ons tab on the home screen and enter add-on browser.
2. Go to "Install from zip file" > and locate the "[repository.teedubb.kodi-1.0.1.zip](#)".
3. Once you have installed the teedubb's repository, go back to Add-ons tab on the home screen and enter add-on browser.
4. Go to "Install from repository" > "teedubb's repo" > "Program Add-ons".
5. Click on the "Steam" add-on and select install to download it.
6. Once the installation is complete, go back to main menu > "Add-ons" > "Program Add-ons" > select "Steam".
7. Set the Kodi and Steam location. Save Steam Launcher settings.
8. Now, you are ready to launch Steam for the first time.

# Add user profiles

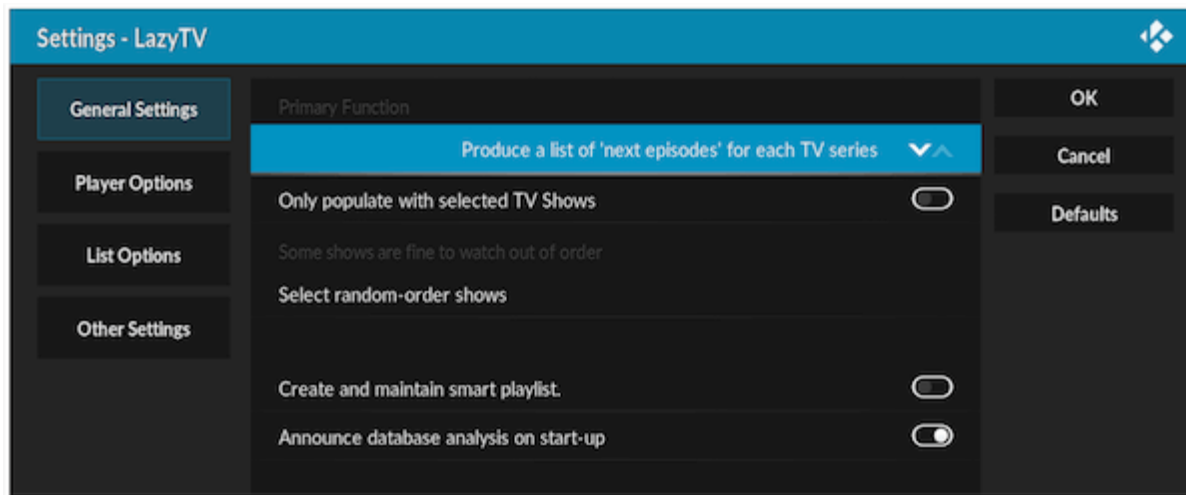
You can easily create new Kodi profiles so that you can tailor settings and user interfaces according to each user's needs.



1. Go to "Profile settings" sub-menu under the "Settings" home menu.
2. Enable "Show login screen on startup" under the General tab.
3. Go to "Profiles" tab and select "Add profile..". Next, you can type a new profile name.
4. Choose a folder where the profile settings will be stored.
5. Select "Profile picture" and browse for a suitable image.
6. Save profile settings by clicking "OK".
7. Choose either "Copy default" or "Start fresh" depending on whether you want to copy default settings and sources or start fresh.

# Improve your TV viewing experience with LazyTV

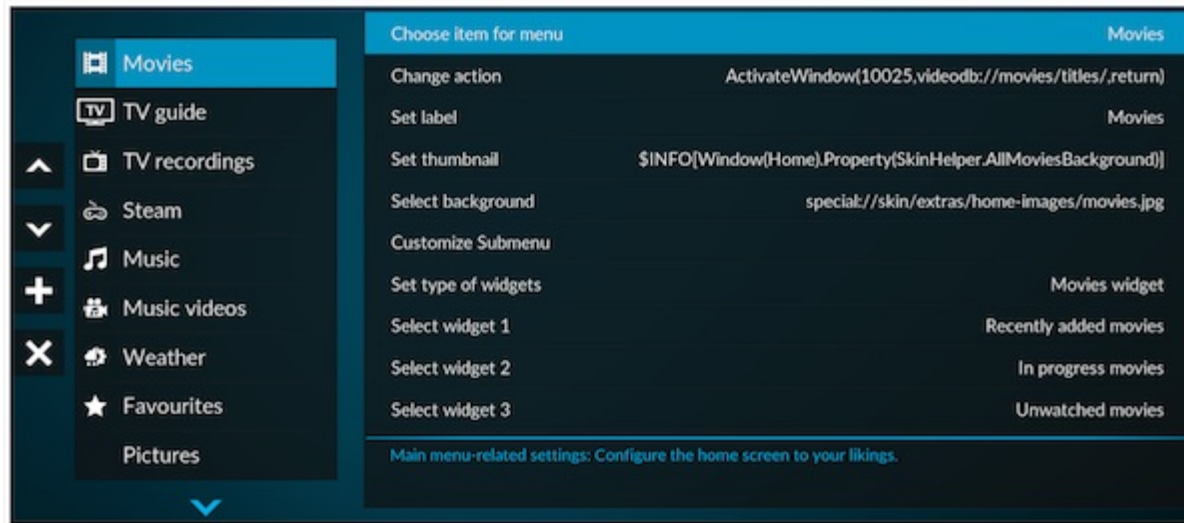
Here are the steps to install and configure LazyTV add-on.



1. Go to Add-ons tab on the home screen and enter add-on browser by clicking the download icon at the bottom of the screen.
2. Go to "Install from repository" > "Program Add-ons" > Select "LazyTV".
3. Select install to download it.
4. Go back to Add-ons menu, and you will find the new YouTube add-on under the Programs Add-ons folder.
5. Press "C-key" to access the context menu and select "Add-on settings".
6. In the settings screen, you can set, for example, whether LazyTV will automatically produce a list of next episodes for each TV Series, or it will create and launch a randomized playlist.
7. Now, you can launch the LazyTV add-on and start watching proposed TV shows. Once a TV show is finished, the LazyTV will suggest the next episode for you to watch.

# Create main menu items

In order to create custom main menu items, you need to download and install Estuary Mod skin.

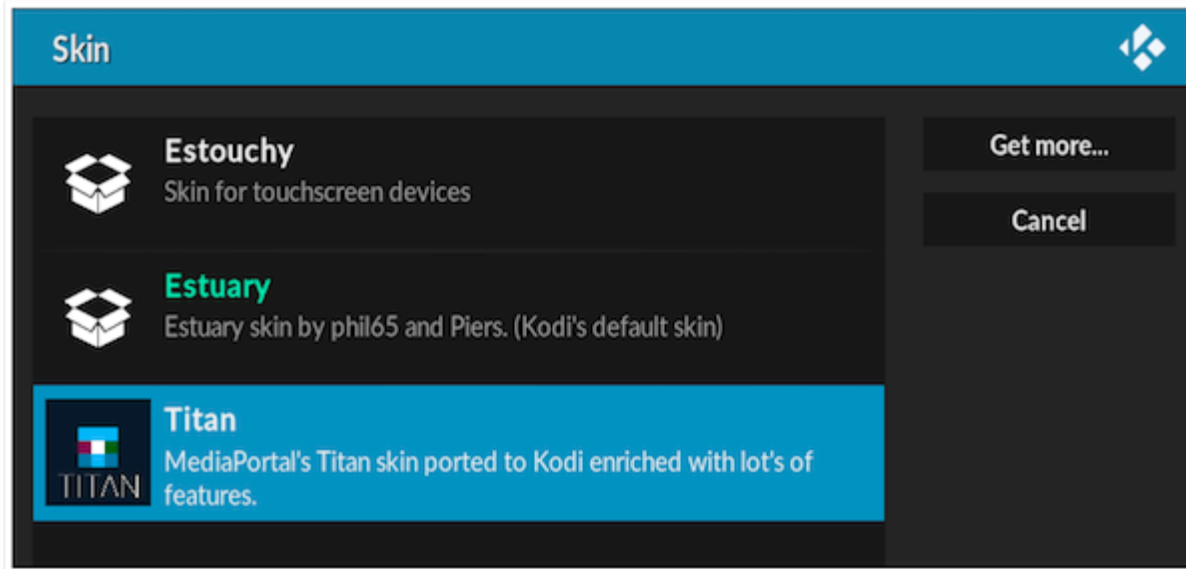


1. In the main menu, go to "Add-ons" and select Add-on browser icon.
2. Select "Install from zip file" and locate "repository.guilouz-X.X.X.zip".
3. Then, go to "Install from repository" > "Guilouz Repository" > "Look and feel" > "Skin" and select "Estuary Mod".
4. Click "Install" and wait until the skin gets downloaded.
5. Go back to home menu and then select "Settings" > "Skin settings" > "Home Menu"> and click "Customize Main Menu".
6. You will see the list of menu items on the left hand side and you can create a new menu item by selecting the "+" icon.
7. Choose item for menu and then browse for suitable action or add-on.
8. You can rename the menu item by selecting "Set label".
9. Select "Set thumbnail" to choose a suitable icon for the menu item.
10. Choose "Select background" if you like to have a specific background.
11. You can use specific widgets by selecting "Set type of widgets".



# Install a new skin (theme)

If you want to customize your Kodi interface according to your needs, I would recommend using Titan as it is stylish and very versatile skin.



1. Go to "Settings" > "Inteface settings".
2. In the Skin tab, click "Skin" which shows Estuary.
3. Click "Get More..." to show the list of all available skins.
4. Select "Titan" skin from the list.
5. Wait until Kodi finishes downloading and installing the skin.
6. In the Skin tab, click again "Skin" which shows Estuary.
7. Select Titan from the list.
8. Click "Yes" to change to the new skin once prompted.

# Want to Learn More?

I created Media Experience Blueprint to make sure you never, ever struggle with your media solution again.

It's like having a friendly coach, someone like me, sitting right next to you on your couch, showing you exactly what to do to set up a user-friendly and enjoyable TV and media experience.

[LEARN MORE](#)