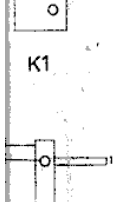
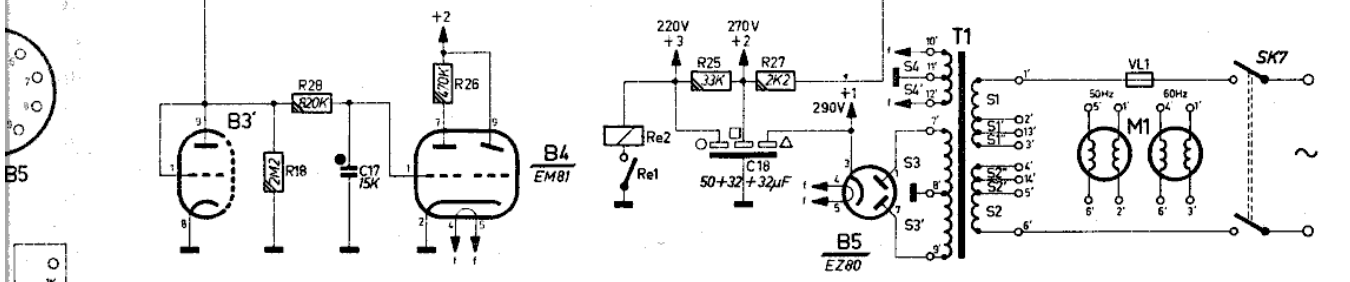
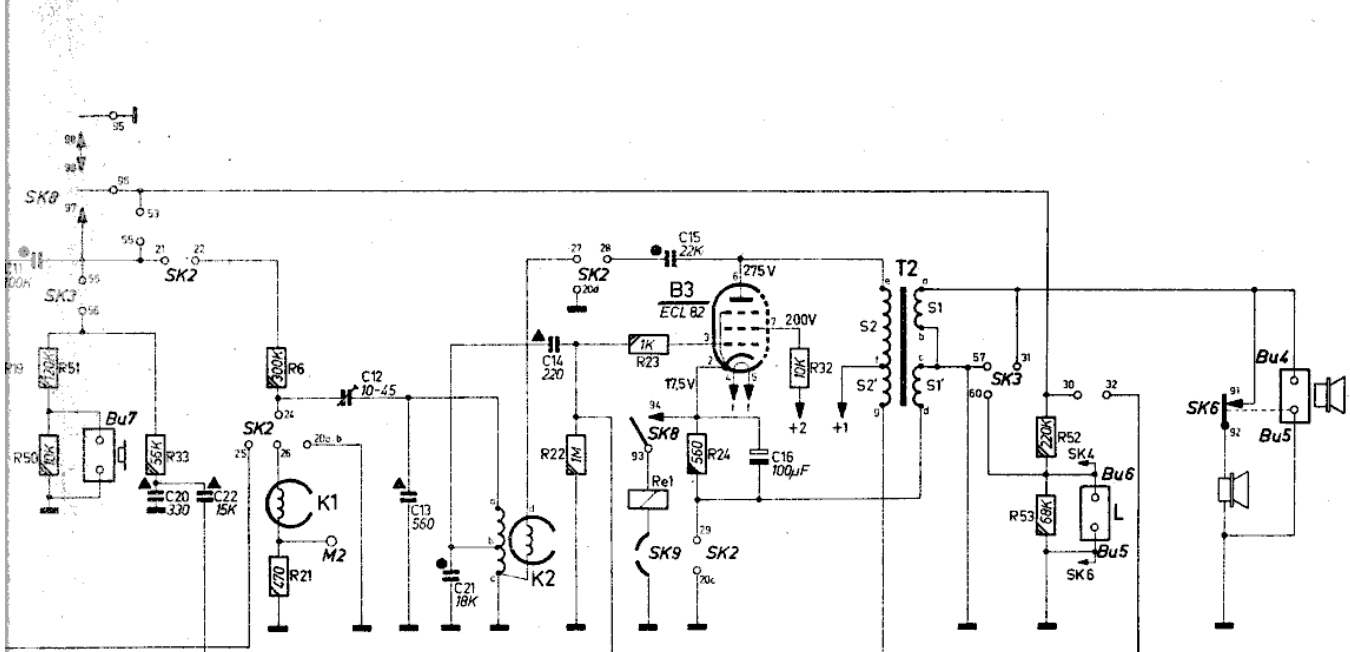
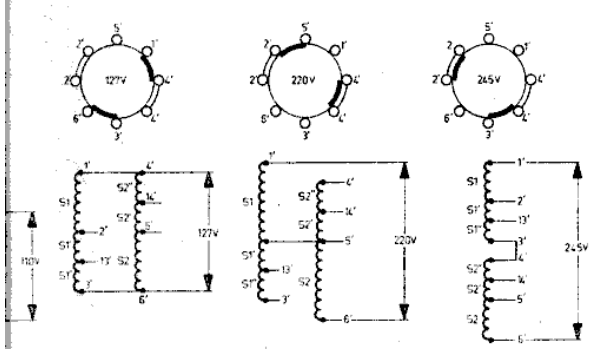
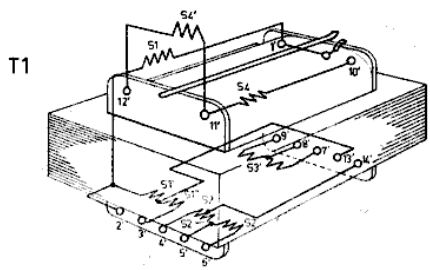


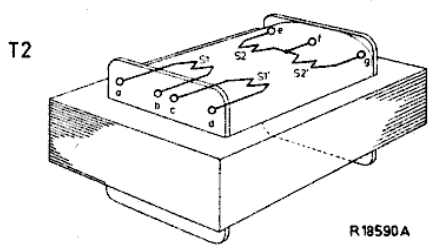
51. 50.	33.	18. 6. 21. 28.	26.	22.	23.	24. 25.	27. 32.	52. 53.
11.	20. 22.	12. 17.	13. 21.	14.	15.	18. 16.		



S1	S1'	S1''	S2	S2'	S2''	S3	S3'	S4	S4'	
110	11	33	110	11	33	285	285	3.75	3.75	V
40			43			1080		0.27		Ω

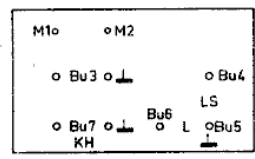


S1	S1	S2	S2	
35	76	122	9.3	V
0.62	37.5	773		Ω



R 18590 A

Fig.21



- PAPER CAPACITOR 400V 10% 906/...
- CARBON RESISTOR 1W 10% 900/...
- CERAMIC CAPACITOR 700V 2% 904/...
- WIRE TRIMMER 907/...
- CARBON RESISTOR 1/2W 2% 901/...
- CARBON RESISTOR 1/2W 10% 902/...